

Creek Valley Retirement Community

ENGAGE, ENJOY AND LIVE

Our luxurious, all-inclusive resort-style community designed for adults 55 and over. Enjoy the comfort and convenience of modern day living without the hassle of upkeep.

- ◆ All utilities included
- ◆ No buy-in fee/month-to-month rent
- ◆ Weekly housekeeping
- ◆ Signature *Freedom Dining* program
- ◆ Concierge and valet parking services
- ◆ Wellness and fitness center
- ◆ Studios, 1, 2, and 3 bedrooms
- ◆ Full designer apartment kitchens
- ◆ 150-seat theater
- ◆ Pets warmly welcomed
- ◆ 24/7 Emergency alert system
- ◆ Resident travel program

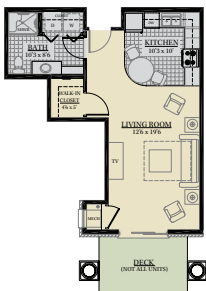


ALL-INCLUSIVE DINING OPTIONS:

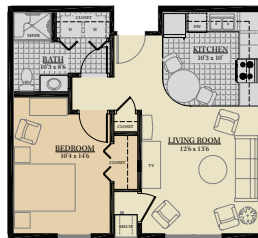
- ◆ SIT-DOWN TABLE SERVICE
- ◆ CASUAL DINING
- ◆ CHEF'S PANTRY
- ◆ ROOM SERVICE

We designed our floor plans with your comfort in mind. Each space is accented with modern details to simplify everyday life. Choose the one that best meets your needs and decorate it as you please.

Studio
566 Sq. Ft.



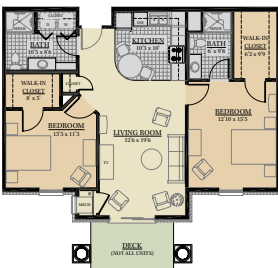
1 Bedroom AC
650 Sq. Ft.



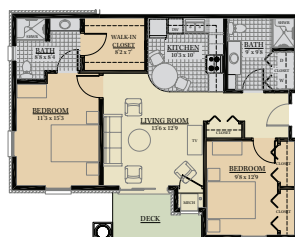
1 Bedroom B
759 Sq. Ft.



2 Bedroom A
1,114 Sq. Ft.



2 Bedroom C
1,013 Sq. Ft.



3 Bedroom A
1,206 Sq. Ft.



RLC
RESORT LIFESTYLE
COMMUNITIES
Creek Valley



15950 Manchester Rd.
Ellisville, MO 63011

To learn more about
Creek Valley call:
636-591-0119

CreekValleyRetirement.com