

# ENGAGE, ENJOY AND LIVE

## Lakeview Retirement Community

Our luxurious, all-inclusive resort-style community is designed for adults 55 and over. Enjoy the comfort and convenience of modern day living without the hassle of upkeep.

- ♦ Paid Utilities
- ♦ No Buy-In Fee/Month-to-Month Rent
- ♦ Weekly Housekeeping
- ♦ **Freedom Dining** program
- ♦ Concierge and Valet Parking Services
- ♦ Wellness and Fitness Center
- ♦ Studios, 1, 2, and 3 Bedrooms
- ♦ Full-Size Modern Kitchens
- ♦ 150-Seat Theatre
- ♦ Pets Welcome
- ♦ 24-Hour Emergency Alert System
- ♦ Resident Travel Program

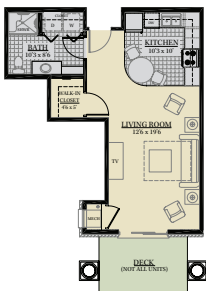


### All-Inclusive Dining Options:

- ♦ Sit-Down Table Service
  - ♦ Casual Dining
  - ♦ Chef's Pantry
  - ♦ Room Service

We designed our floor plans with your comfort in mind. Each space is accented with modern details to simplify everyday life. Choose the one that best meets your needs and decorate it as you please.

**Studio**  
566 Sq. Ft.



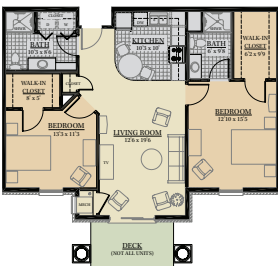
**1 Bedroom AC**  
650 Sq. Ft.



**1 Bedroom B**  
759 Sq. Ft.



**2 Bedroom A**  
1,114 Sq. Ft.



**2 Bedroom C**  
1,013 Sq. Ft.



**3 Bedroom A**  
1,206 Sq. Ft.



**RLC**  
RESORT LIFESTYLE  
COMMUNITIES  
*Lakeview*



2134 N. Lake Drive  
Columbia, SC 29212

To learn more about  
Lakeview call:  
**803-457-8281**

LakeviewRetirement.com